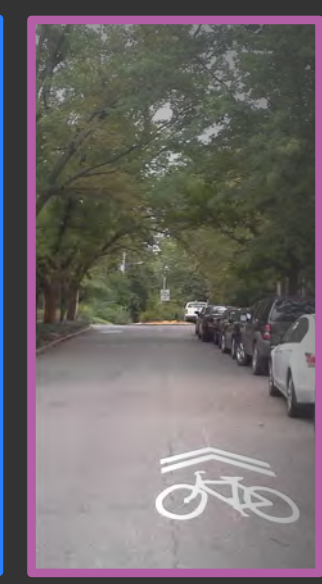




- Bike Repair Station
- Bike Shop
- City Hall
- Groceries
- Hospital - Medical
- Library
- Museum
- Overlook
- Pool
- Public Restroom
- Rec Center
- School
- Stairs



- Paved Trail
  - Un-Paved
  - Hiking/Mountain Biking
  - Safest
  - Safe
- Bike Lane**  
Dedicated lane on roadway edge. Marked with white line & bike decal.
- Bike Boulevard**  
Bikes & cars share the same roadway. Sharrow graphics on road. Bike decal on street signs.

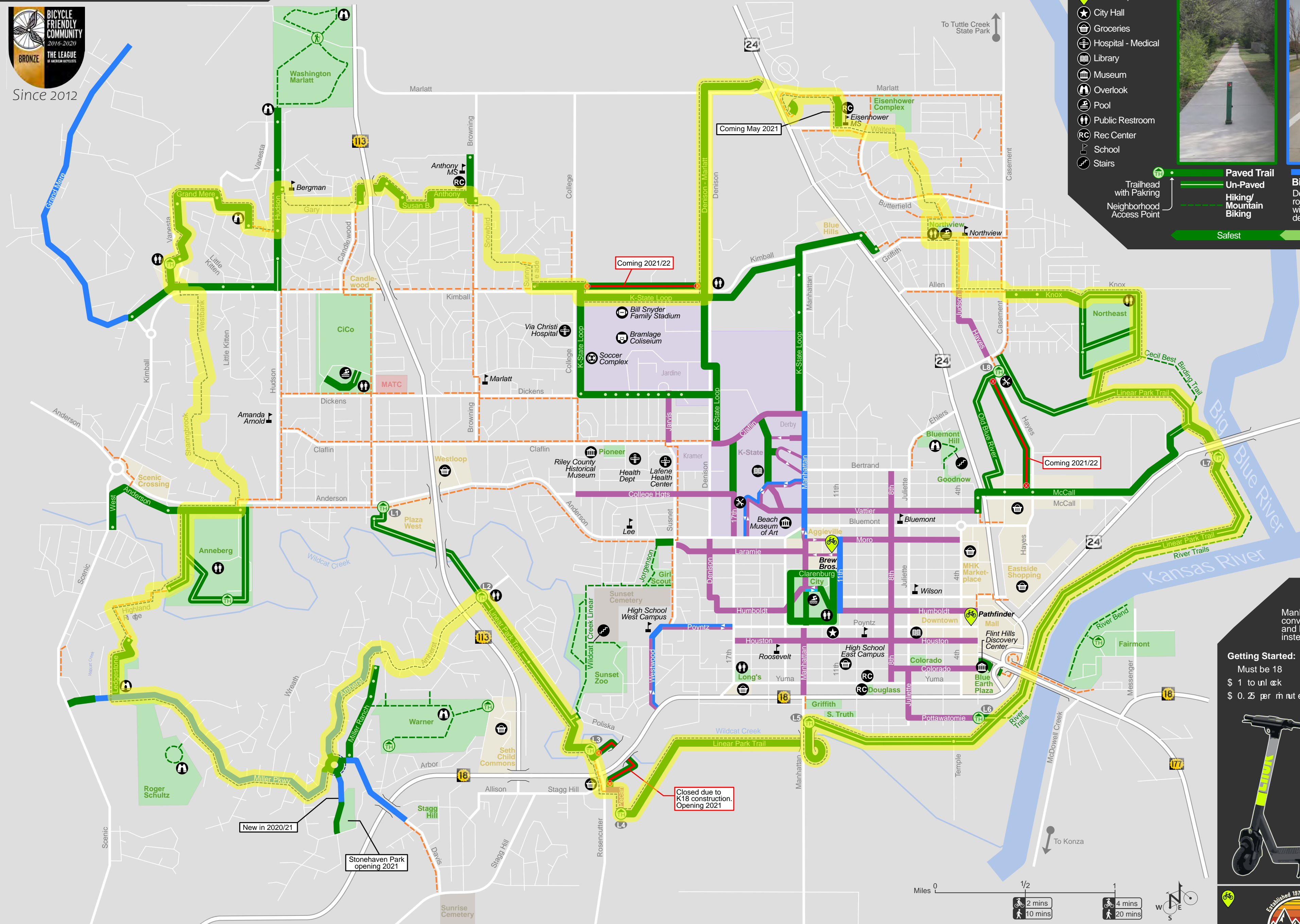
**Highway**  
Experienced cyclists only

**Major Road**  
Experienced cyclists only

**Local Road**  
Low speeds  
Low traffic

**Sidewalk Connection**  
Only for key connections & use along Major Roads & Highways where no bike facilities are present

It is illegal to ride on sidewalks in Aggieville & Downtown



### Little Apple Loop

We all want the Linear Trail to be completed, but that is years away. Thankfully you can ride the Little Apple Loop today!

- 22.5 mile loop
- 10 existing trails connected via Bike Lanes, Bike Blvds, low volume neighborhood streets, and a few key sidewalks
- Urban, recreational, and nature-filled cycling all in one
- Accessible from all parts of Manhattan
- Get to know Manhattan in a whole new way

For more info including Google Maps & GPX data, visit: [www.bikewalkmnhk.com/little-apple-loop](http://www.bikewalkmnhk.com/little-apple-loop)

### Bike Blvd Wayfinding

Look for Wayfinding signs, Sharrow, and street signs with bicycles, to help direct you to key destinations along bike-friendly streets.

**Moro St**

### LINK e-scooters

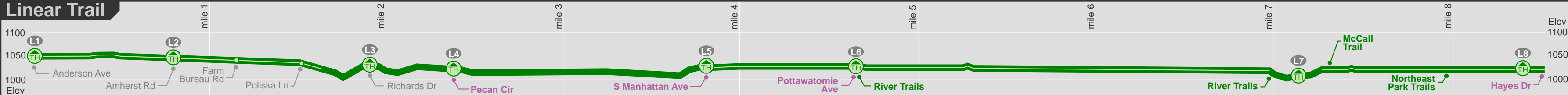
Manhattan's new micro-transit option is fun and convenient. If your trip is a little too far to walk and biking is not an option, try a LINK scooter instead of driving.

**Getting Started:**  
Must be 18  
\$ 1 to unlock  
\$ 0.25 per minute

**Riding:** follow all state & local rules:  
• One rider per scooter  
• It's illegal to ride under the influence of alcohol or drugs  
• Follow same traffic laws as bicycles  
• When riding on the street, use bike lanes where possible  
• When riding on the sidewalk, yield to people walking

**Parking:** park e-scooters in areas & locations approved by local ordinances:  
• On K-State campus, in Aggieville and Downtown, park at city bike racks and approved locations with designated signage.  
• Park on the street against the curb where vehicle parking is allowed  
• Park on private property where authorized by the owner  
• Do not park on sidewalks or in crosswalks

Download the app



306 Poyntz Ave  
alpineshop.com 785.539.5639

1110 Laramie  
hopsandsprockets.com 785.537.3737